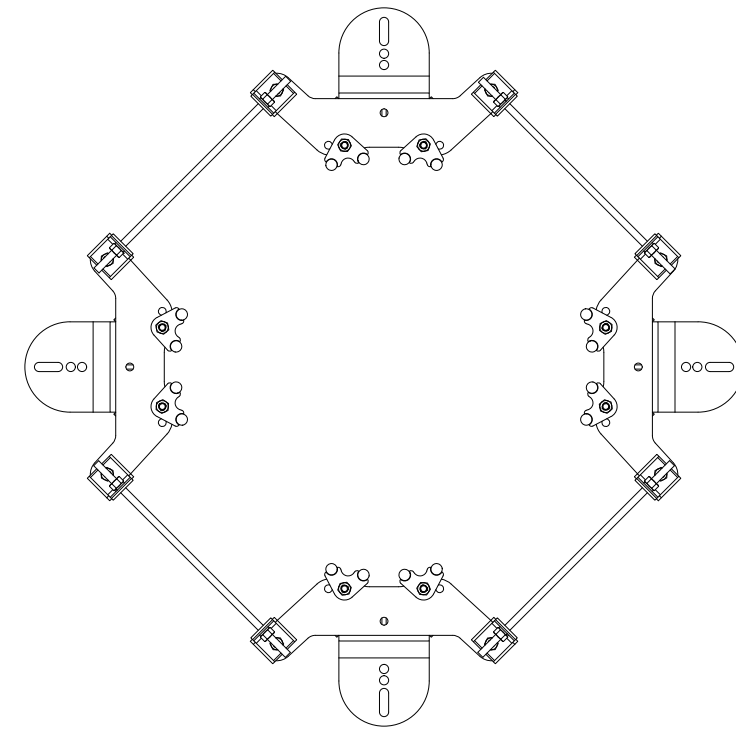
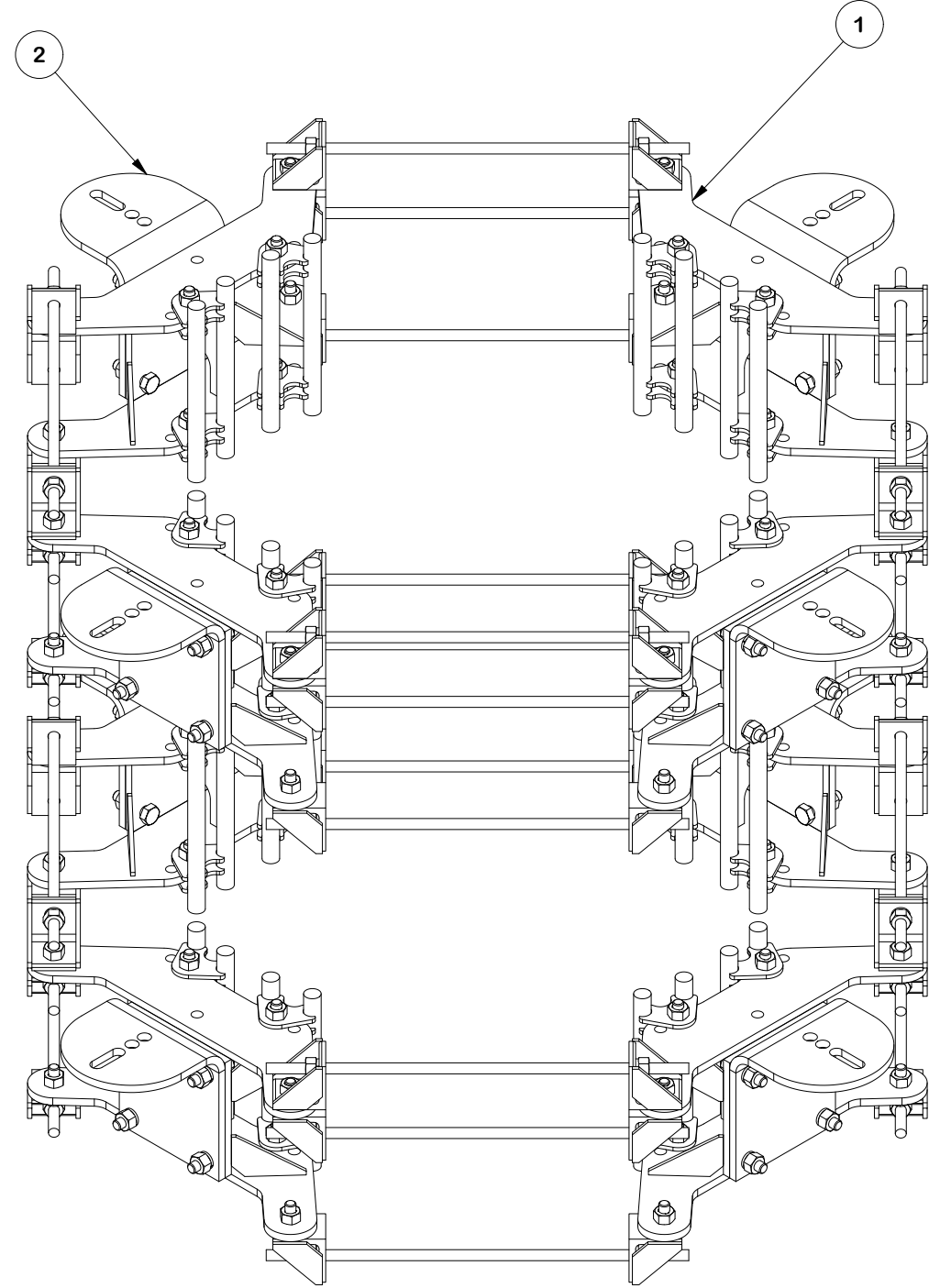
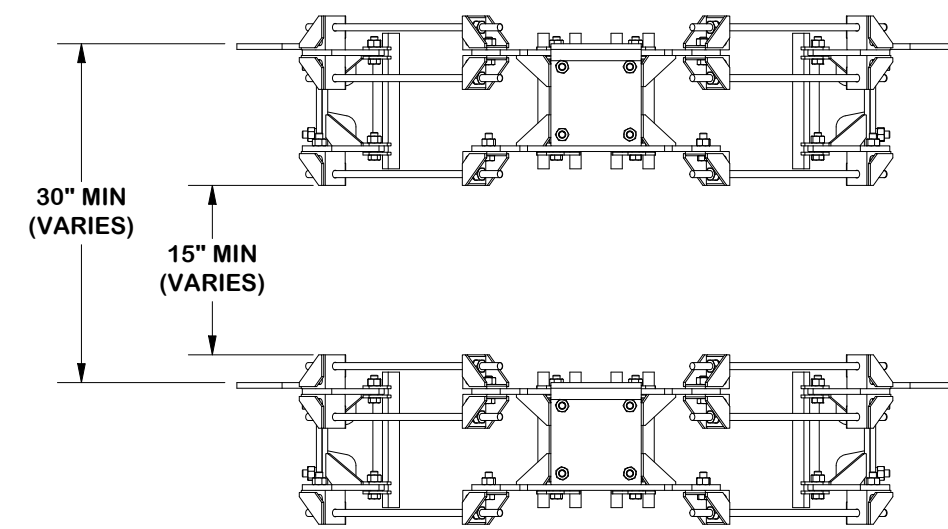


PARTS LIST						UNIT WT.	NET WT.
1	2	FLX4-SD			FLEXIBLE RING MOUNT	369.07	738.14
2	4	RMBP	P-RMBP		SINGLE-SECTOR MONOPOLE DIRECT FRAME CONNECT KIT	37.96	151.86
						TOTAL WT. #	890.00



TOP DOWN REFERENCE VIEW



FINISH:
HOT DIP GALVANIZED.

TOLERANCE NOTES
 TOLERANCES ON DIMENSIONS, UNLESS OTHERWISE NOTED ARE:
 SAWED, SHEARED AND GAS CUT EDGES (± 0.030 ")
 DRILLED AND GAS CUT HOLES (± 0.030 ") - NO CONING OF HOLES
 LASER CUT EDGES AND HOLES (± 0.010 ") - NO CONING OF HOLES
 BENDS AND ANGLES ARE $\pm 1/2$ DEGREE
 ALL OTHER MACHINING (± 0.030 ")
 ALL OTHER ASSEMBLY (± 0.060 ")

PATENT INFORMATION: WWW.SITEPRO1.COM/PATENTS

PROPRIETARY NOTE:
 THE DATA AND TECHNIQUES CONTAINED IN THIS DRAWING ARE PROPRIETARY INFORMATION OF VALMONT INDUSTRIES AND CONSIDERED A TRADE SECRET. ANY USE OR DISCLOSURE WITHOUT THE CONSENT OF VALMONT INDUSTRIES IS STRICTLY PROHIBITED.

DESCRIPTION
**MONOPOLE DIRECT FRAME CONNECT KIT
 4 SECTOR FLEX COLLAR**

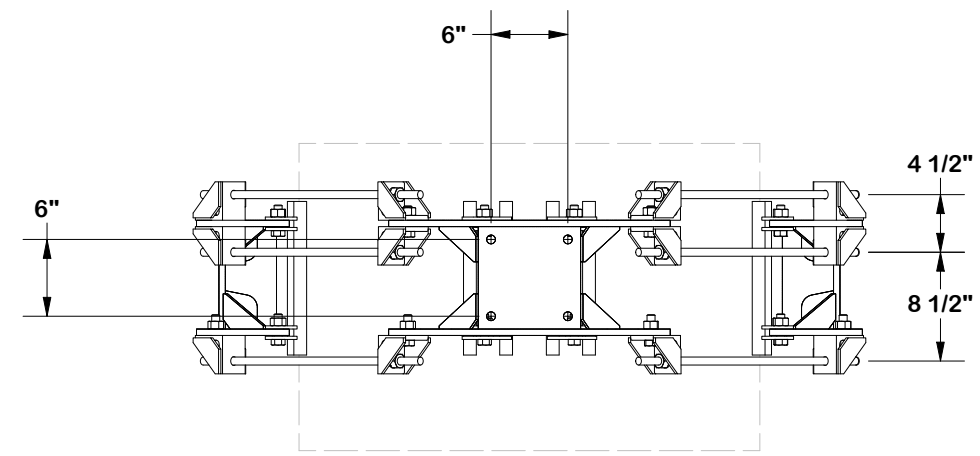
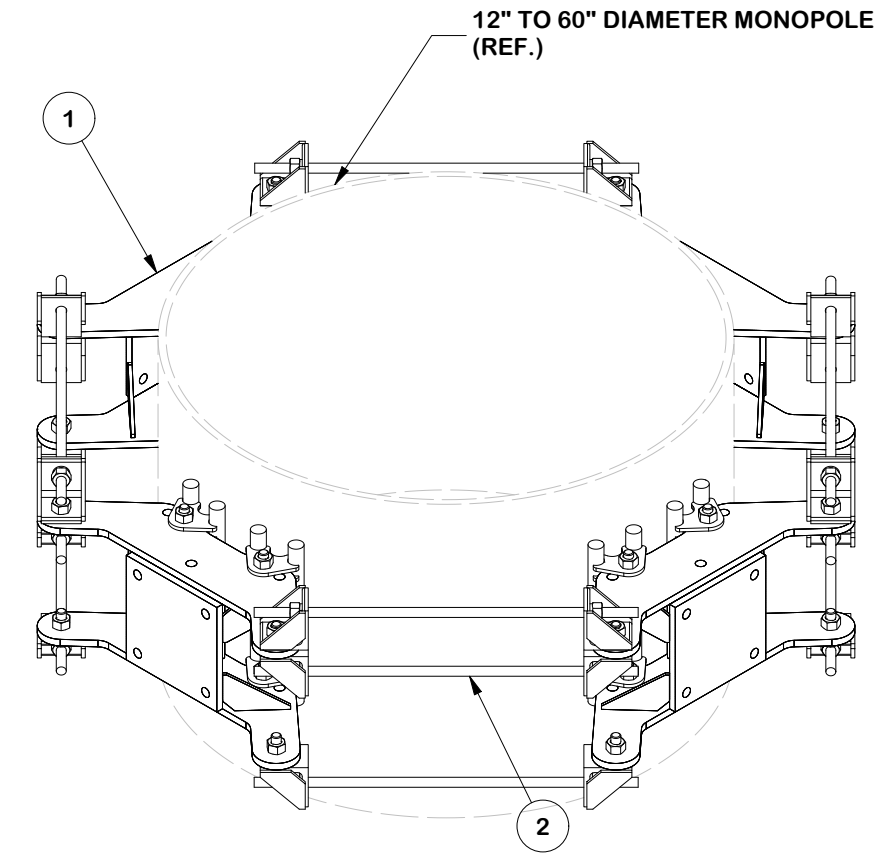
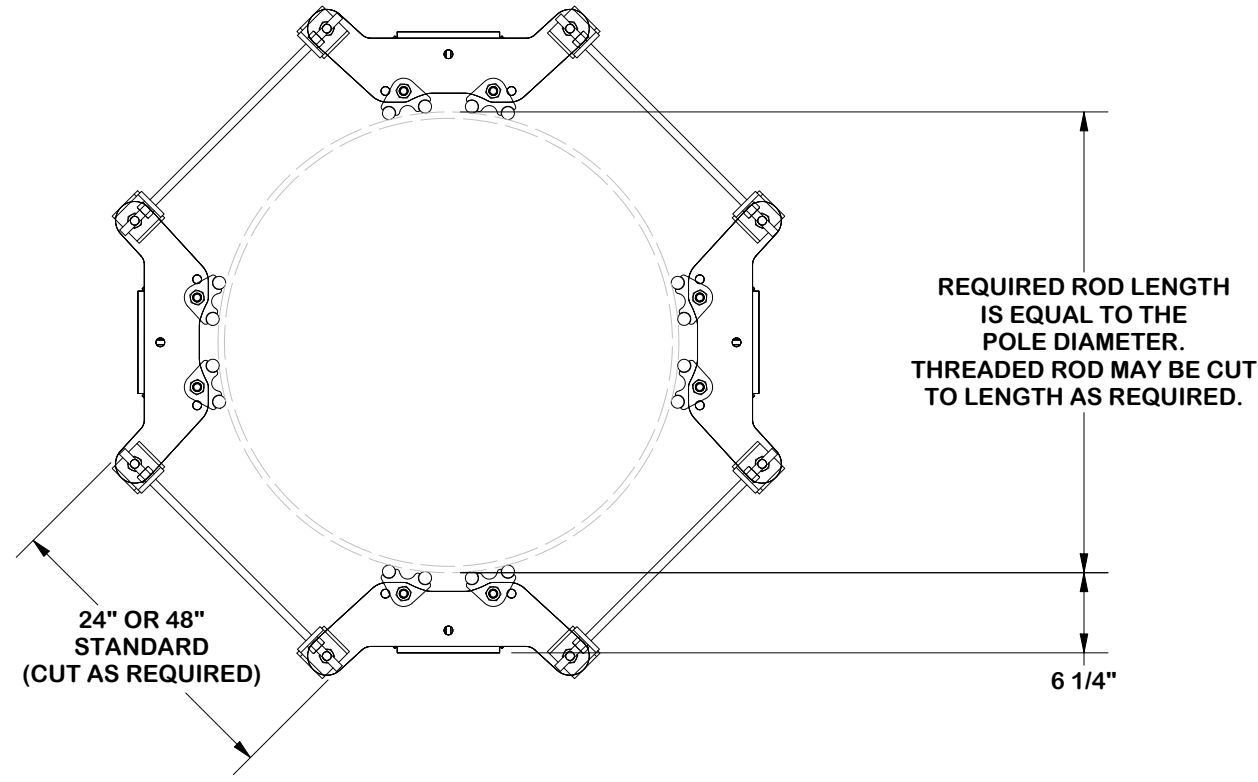
CPD NO. SP1	DRAWN BY SDR 8/13/2025	ENG. APPROVAL 8/14/2025
CLASS 87	SUB 02	DRAWING USAGE CUSTOMER
	CHECKED BY JET	8/14/2025

SITE PRO 1
 A valmont COMPANY

Engineering Support Team:
 sp1engineering@valmont.com

PART NO. MDFCC-FLX4	PAGE 1 OF 7
DWG. NO. MDFCC-FLX4	

PARTS LIST						
ITEM	QTY	PART NO.	BOX NO.	PART DESCRIPTION	UNIT WT.	NET WT.
1	4	FLX-SDSS	P-FLX-SDSS	FLEXIBLE RING MOUNT SINGLE SECTOR ASSEMBLY	72.51	290.06
2	1	UQB4-HDWE	P-UQB4-HDWE	4-SIDED THREADED ROD KIT	79.01	79.01
TOTAL WT. #					369.07	



- NOTE:**
1. LOCKNUTS CANNOT BE LOOSENED
 2. TIGHTEN LOCKNUTS AFTER DESIRED POSITION (SEE PAGE 3)
 3. COMPATIBLE WITH 6" X 6" BOLT PATTERN & FORTRESS™ SERIES

FINISH:
HOT DIP GALVANIZED.

REV	DESCRIPTION OF REVISIONS	CPD	BY	DATE
B	ADDED NOTE TO PAGE 1	SP1	ADB	3/26/2025
A	CHANGED KIT	NCS	NSP	11/12/2024

TOLERANCE NOTES

TOLERANCES ON DIMENSIONS, UNLESS OTHERWISE NOTED ARE:
 SAWED, SHEARED AND GAS CUT EDGES ($\pm 0.030"$)
 DRILLED AND GAS CUT HOLES ($\pm 0.030"$) - NO CONING OF HOLES
 LASER CUT EDGES AND HOLES ($\pm 0.010"$) - NO CONING OF HOLES
 BENDS AND ANGLES ARE $\pm 1/2$ DEGREE
 ALL OTHER MACHINING ($\pm 0.030"$)
 ALL OTHER ASSEMBLY ($\pm 0.060"$)

PATENT INFORMATION: WWW.SITEPRO1.COM/PATENTS

PROPRIETARY NOTE:
 THE DATA AND TECHNIQUES CONTAINED IN THIS DRAWING ARE PROPRIETARY INFORMATION OF VALMONT INDUSTRIES AND CONSIDERED A TRADE SECRET. ANY USE OR DISCLOSURE WITHOUT THE CONSENT OF VALMONT INDUSTRIES IS STRICTLY PROHIBITED.

DESCRIPTION			
MONOPOLE DIRECT FRAME CONNECT KIT 4 SECTOR FLEX COLLAR			
CPD NO.	DRAWN BY	ENG. APPROVAL	
SP1	SDR 8/13/2025	8/14/2025	
CLASS	SUB	DRAWING USAGE	CHECKED BY
87	02	CUSTOMER	JET 8/14/2025



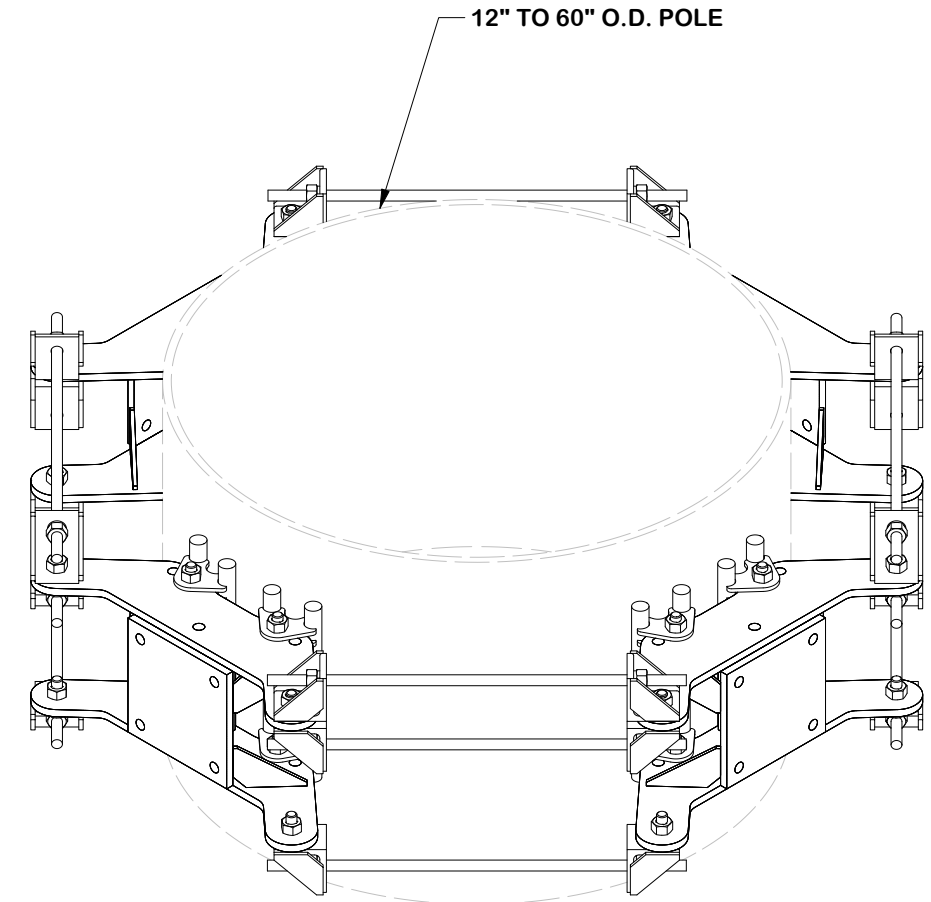
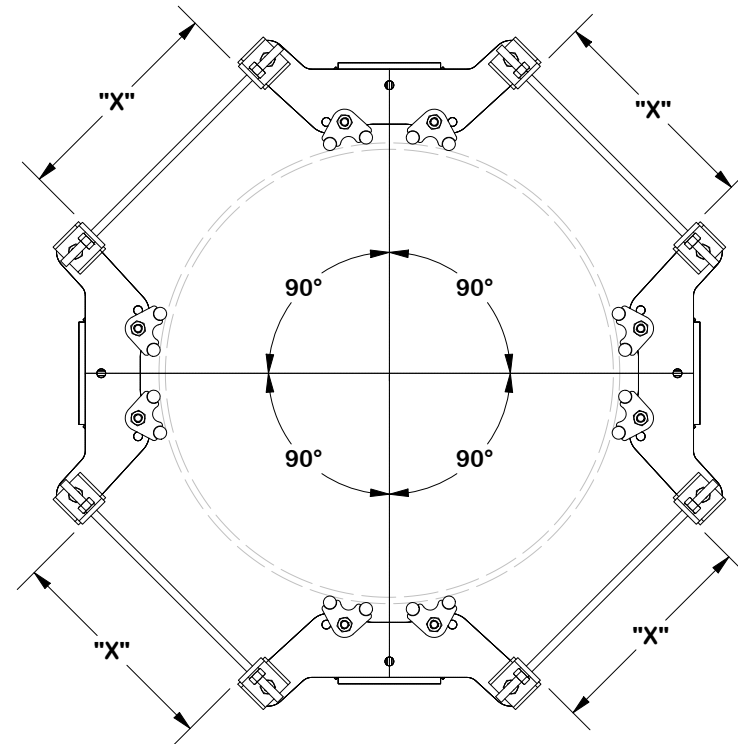
A valmont COMPANY

Engineering Support Team:
sp1engineering@valmont.com

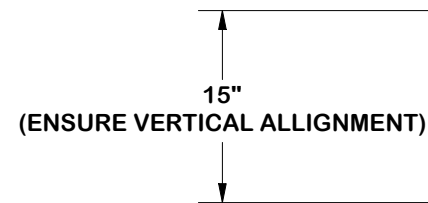
PART NO.	FLX4-SD
DWG. NO.	MDFCC-FLX4

REV	DESCRIPTION OF REVISIONS	CPD	BY	DATE
B	ADDED NOTE TO PAGE 1	SP1	ADB	3/26/2025
A	CHANGED KIT	NCS	NSP	11/12/2024

**NOTE:
ENSURE EQUAL DISTANCE
BETWEEN BRACKETS "X"
AND AT 90° APART**



**POLE TOP
14" MIN
RECOMMENDED**



TOLERANCE NOTES

TOLERANCES ON DIMENSIONS, UNLESS OTHERWISE NOTED ARE:
 SAWED, SHEARED AND GAS CUT EDGES ($\pm 0.030"$)
 DRILLED AND GAS CUT HOLES ($\pm 0.030"$) - NO CONING OF HOLES
 LASER CUT EDGES AND HOLES ($\pm 0.010"$) - NO CONING OF HOLES
 BENDS AND ANGLES ARE $\pm 1/2$ DEGREE
 ALL OTHER MACHINING ($\pm 0.030"$)
 ALL OTHER ASSEMBLY ($\pm 0.060"$)

PATENT INFORMATION: WWW.SITEPRO1.COM/PATENTS

PROPRIETARY NOTE:
 THE DATA AND TECHNIQUES CONTAINED IN THIS DRAWING ARE PROPRIETARY INFORMATION OF VALMONT INDUSTRIES AND CONSIDERED A TRADE SECRET. ANY USE OR DISCLOSURE WITHOUT THE CONSENT OF VALMONT INDUSTRIES IS STRICTLY PROHIBITED.

DESCRIPTION
**MONOPOLE DIRECT FRAME CONNECT KIT
 4 SECTOR FLEX COLLAR**

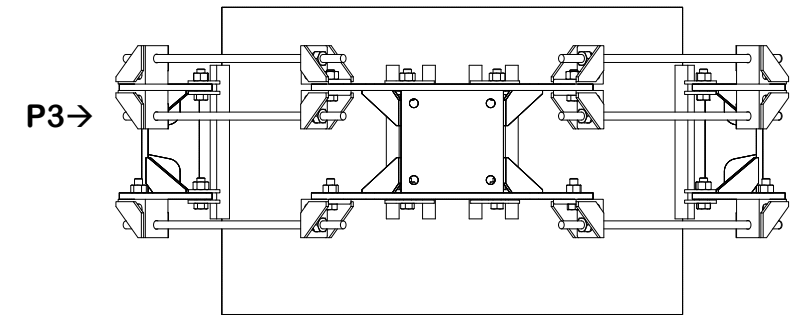
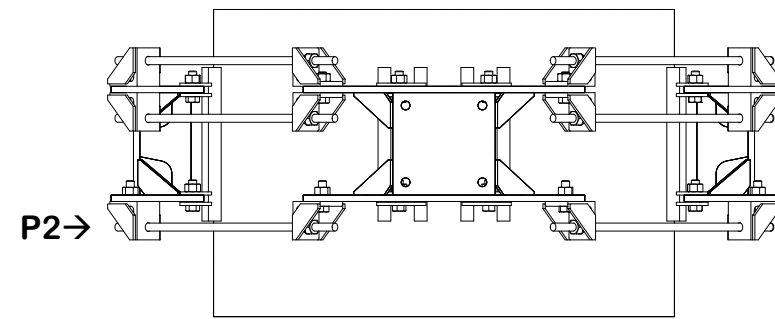
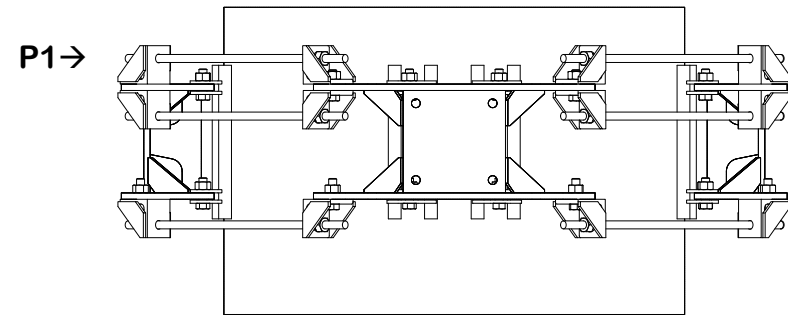
SITE PRO 1
 A valmont COMPANY
 Engineering Support Team:
sp1engineering@valmont.com

B	ADDED NOTE TO PAGE 1	SP1	ADB	3/26/2025
A	CHANGED KIT	NCS	NSP	11/12/2024
REV	DESCRIPTION OF REVISIONS	CPD	BY	DATE
REVISION HISTORY				

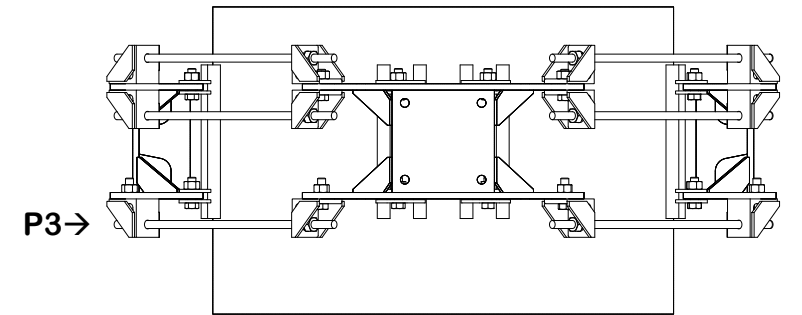
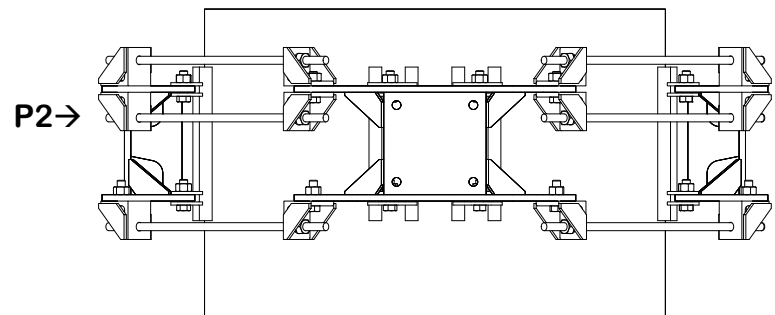
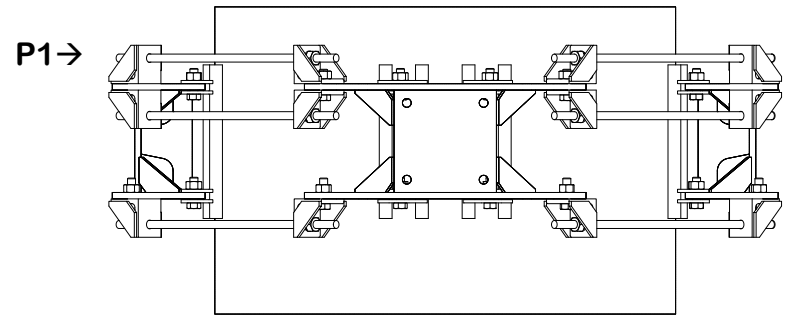
CPD NO.	DRAWN BY	ENG. APPROVAL
SP1	SDR 8/13/2025	8/14/2025
CLASS	DRAWING USAGE	CHECKED BY
87	CUSTOMER	JET 8/14/2025

PART NO.	FLX4-SD
DWG. NO.	MDFCC-FLX4

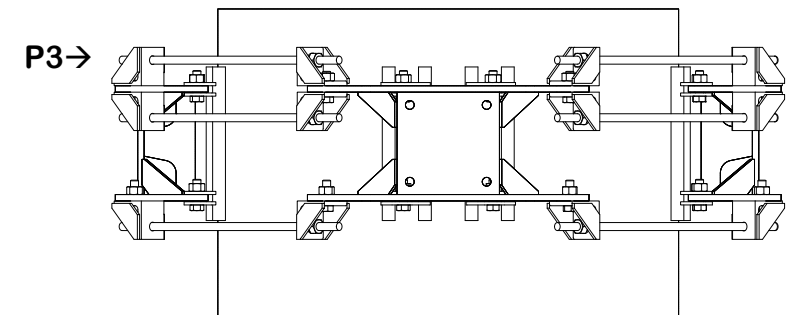
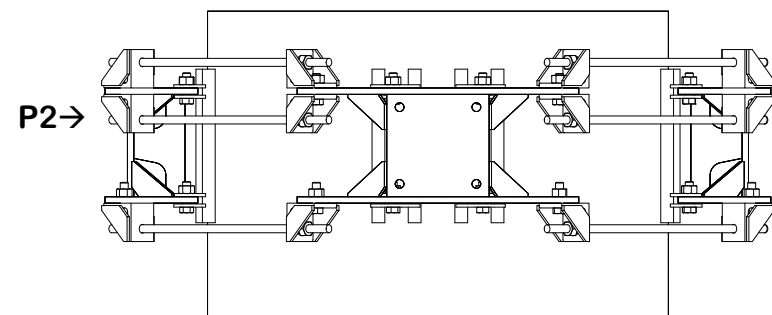
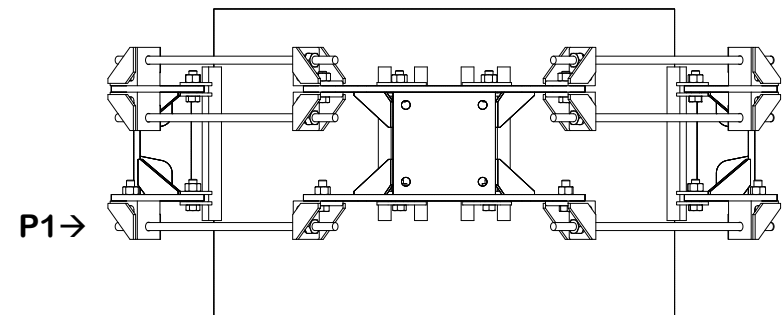
INSTALL ORDER



INITIAL TIGHTENING



FINAL TIGHTENING



TOLERANCE NOTES

TOLERANCES ON DIMENSIONS, UNLESS OTHERWISE NOTED ARE:
 SAWED, SHEARED AND GAS CUT EDGES ($\pm 0.030"$)
 DRILLED AND GAS CUT HOLES ($\pm 0.030"$) - NO CONING OF HOLES
 LASER CUT EDGES AND HOLES ($\pm 0.010"$) - NO CONING OF HOLES
 BENDS AND ANGLES ARE $\pm 1/2$ DEGREE
 ALL OTHER MACHINING ($\pm 0.030"$)
 ALL OTHER ASSEMBLY ($\pm 0.060"$)

PATENT INFORMATION: WWW.SITEPRO1.COM/PATENTS

PROPRIETARY NOTE:
 THE DATA AND TECHNIQUES CONTAINED IN THIS DRAWING ARE PROPRIETARY INFORMATION OF VALMONT INDUSTRIES AND CONSIDERED A TRADE SECRET. ANY USE OR DISCLOSURE WITHOUT THE CONSENT OF VALMONT INDUSTRIES IS STRICTLY PROHIBITED.

DESCRIPTION
**MONOPOLE DIRECT FRAME CONNECT KIT
 4 SECTOR FLEX COLLAR**

CPD NO. SP1	DRAWN BY SDR 8/13/2025	ENG. APPROVAL 8/14/2025
CLASS 87	SUB 02	DRAWING USAGE CUSTOMER
CHECKED BY JET 8/14/2025		



Engineering Support Team:
sp1engineering@valmont.com

PART NO. FLX4-SD
DWG. NO. MDFCC-FLX4

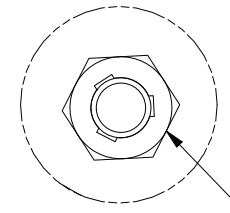
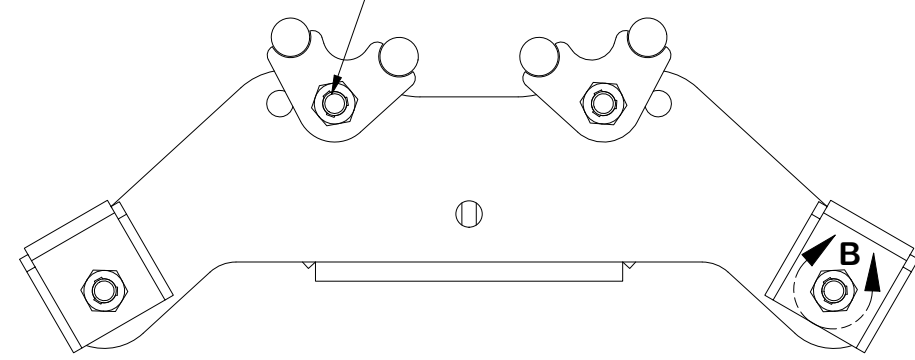
REV	DESCRIPTION OF REVISIONS	CPD	BY	DATE
B	ADDED NOTE TO PAGE 1	SP1	ADB	3/26/2025
A	CHANGED KIT	NCS	NSP	11/12/2024

REVISION HISTORY

PARTS LIST

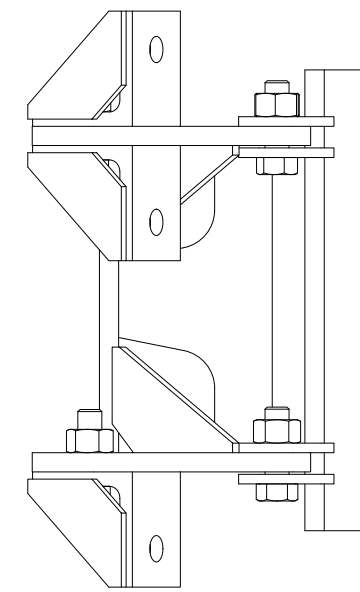
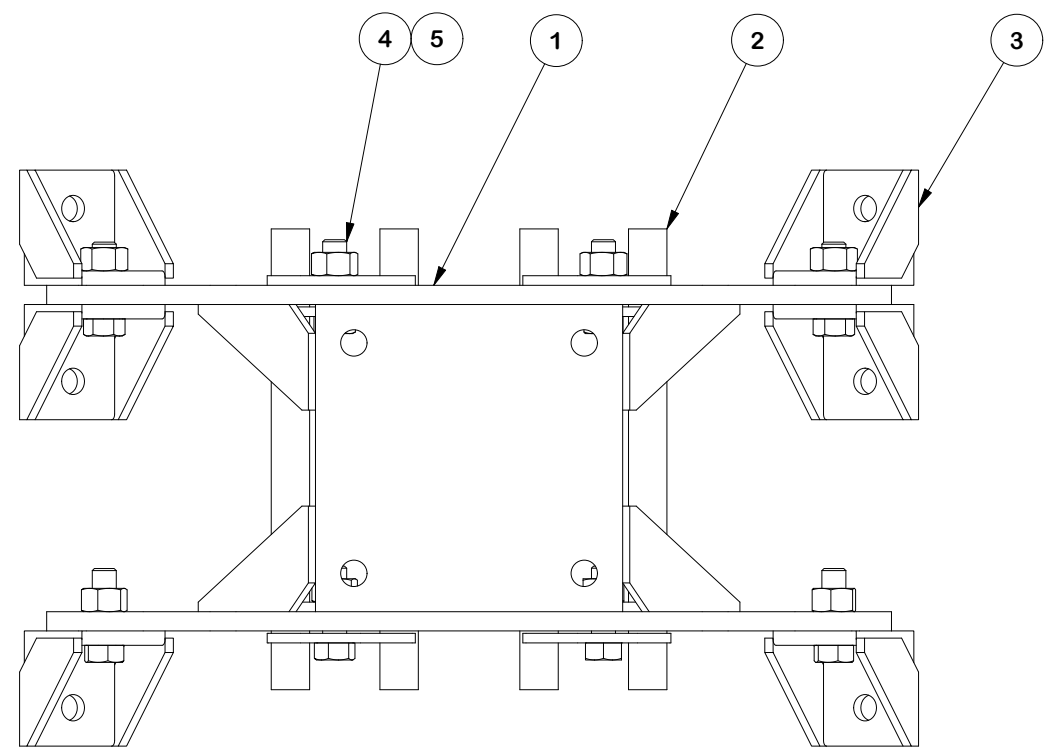
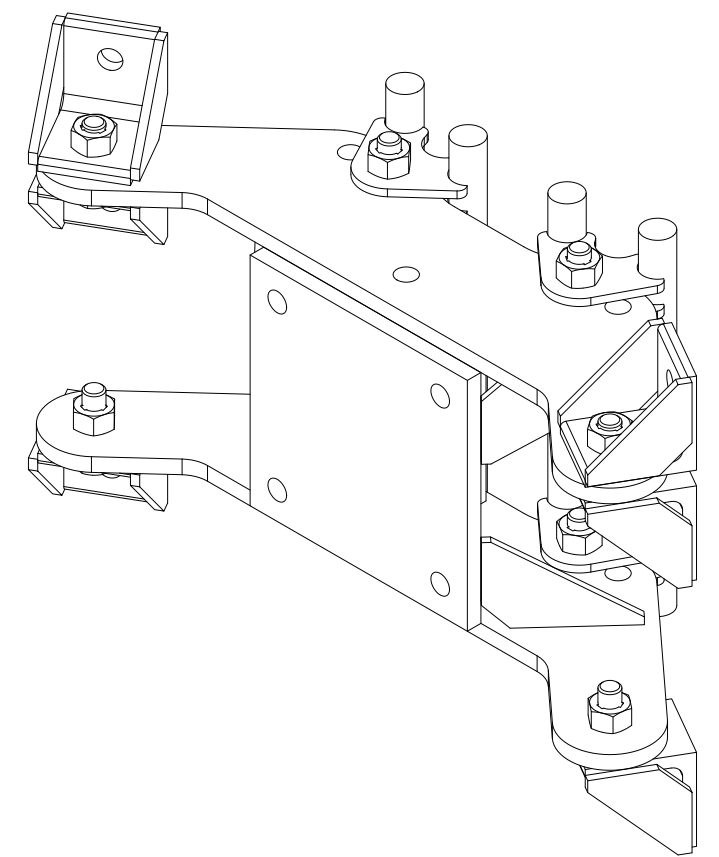
ITEM	QTY	PART NO.	PART DESCRIPTION	UNIT WT.	NET WT.
1	1	X-CR-SDW	FLEXIBLE RING MOUNT	42.23	42.23
2	2	X-CR-PW12	12" CLAMP RING PIVOT WELDMENT	6.93	13.85
3	6	X-CR-AGW	ANGLE ON WELDMENT	2.20	13.18
4	8	G5802	5/8" x 2" HDG HEX BOLT GR5	0.27	2.16
5	8	G58TRI-LNUT	5/8" HDG HEAVY 2H TRI-LOCK NUT	0.14	1.10
TOTAL WT. #				72.51	

NOTE:
CLAMP RING PIVOT WELDMENT SHOULD BE ASSEMBLED IN THE INNER HOLE OF WELDMENT



DETAIL B

NOTE:
FOR TRI-LOCKNUT INSTALLATION, ENSURE GROOVED SIDE IS ORIENTED AWAY FROM BOLT HEAD



FINISH:
HOT DIP GALVANIZED.

TOLERANCE NOTES

TOLERANCES ON DIMENSIONS, UNLESS OTHERWISE NOTED ARE:
 SAWED, SHEARED AND GAS CUT EDGES ($\pm 0.030"$)
 DRILLED AND GAS CUT HOLES ($\pm 0.030"$) - NO CONING OF HOLES
 LASER CUT EDGES AND HOLES ($\pm 0.010"$) - NO CONING OF HOLES
 BENDS AND ANGLES ARE $\pm 1/2$ DEGREE
 ALL OTHER MACHINING ($\pm 0.030"$)
 ALL OTHER ASSEMBLY ($\pm 0.060"$)

PATENT INFORMATION: WWW.SITEPRO1.COM/PATENTS

PROPRIETARY NOTE:
THE DATA AND TECHNIQUES CONTAINED IN THIS DRAWING ARE PROPRIETARY INFORMATION OF VALMONT INDUSTRIES AND CONSIDERED A TRADE SECRET. ANY USE OR DISCLOSURE WITHOUT THE CONSENT OF VALMONT INDUSTRIES IS STRICTLY PROHIBITED.

DESCRIPTION
**MONOPOLE DIRECT FRAME CONNECT KIT
4 SECTOR FLEX COLLAR**

CPD NO. **SP1** DRAWN BY **SDR 8/13/2025** ENG. APPROVAL **8/14/2025**

CLASS **87** SUB **02** DRAWING USAGE **CUSTOMER** CHECKED BY **JET 8/14/2025**

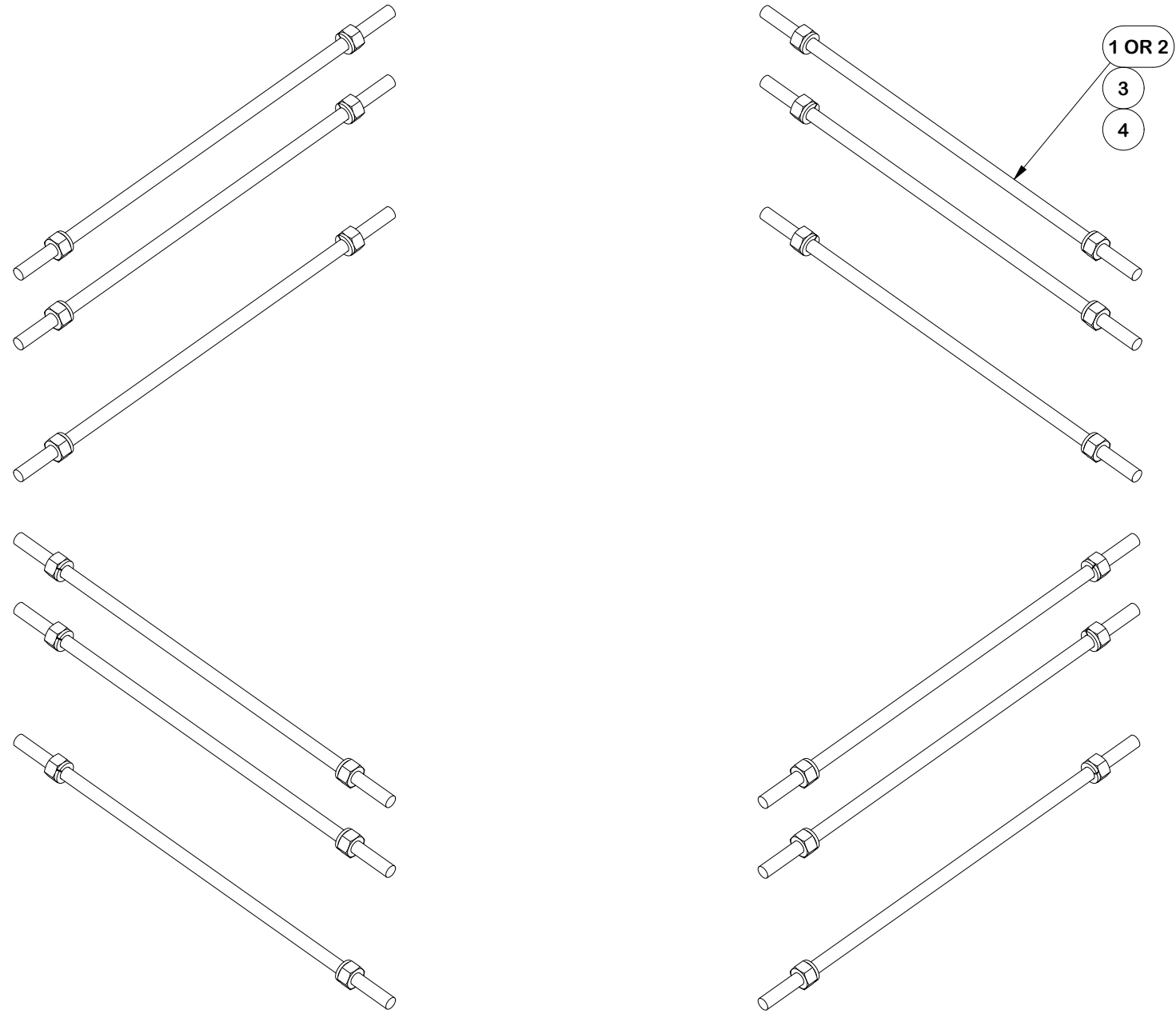


Engineering Support Team:
sp1engineering@valmont.com

PART NO. **FLX-SDSS**

DWG. NO. **MDFCC-FLX4**

PARTS LIST					
ITEM	QTY	PART NO.	PART DESCRIPTION	UNIT WT.	NET WT.
1	12	G58R-48	5/8" x 48" THREADED ROD (HDG.)	4.18	50.18
2	12	G58R-24	5/8" x 24" THREADED ROD (HDG.)	2.09	25.09
3	24	G58LW	5/8" HDG LOCKWASHER	0.03	0.63
4	24	G58NUT	5/8" HDG HEAVY 2H HEX NUT	0.13	3.12
TOTAL WT. #					79.01



FINISH:
HOT DIP GALVANIZED.

TOLERANCE NOTES

TOLERANCES ON DIMENSIONS, UNLESS OTHERWISE NOTED ARE:
 SAWED, SHEARED AND GAS CUT EDGES ($\pm 0.030"$)
 DRILLED AND GAS CUT HOLES ($\pm 0.030"$) - NO CONING OF HOLES
 LASER CUT EDGES AND HOLES ($\pm 0.010"$) - NO CONING OF HOLES
 BENDS AND ANGLES ARE $\pm 1/2$ DEGREE
 ALL OTHER MACHINING ($\pm 0.030"$)
 ALL OTHER ASSEMBLY ($\pm 0.060"$)

PATENT INFORMATION: WWW.SITEPRO1.COM/PATENTS

PROPRIETARY NOTE:
 THE DATA AND TECHNIQUES CONTAINED IN THIS DRAWING ARE PROPRIETARY INFORMATION OF VALMONT INDUSTRIES AND CONSIDERED A TRADE SECRET. ANY USE OR DISCLOSURE WITHOUT THE CONSENT OF VALMONT INDUSTRIES IS STRICTLY PROHIBITED.

DESCRIPTION
**MONOPOLE DIRECT FRAME CONNECT KIT
 4 SECTOR FLEX COLLAR**

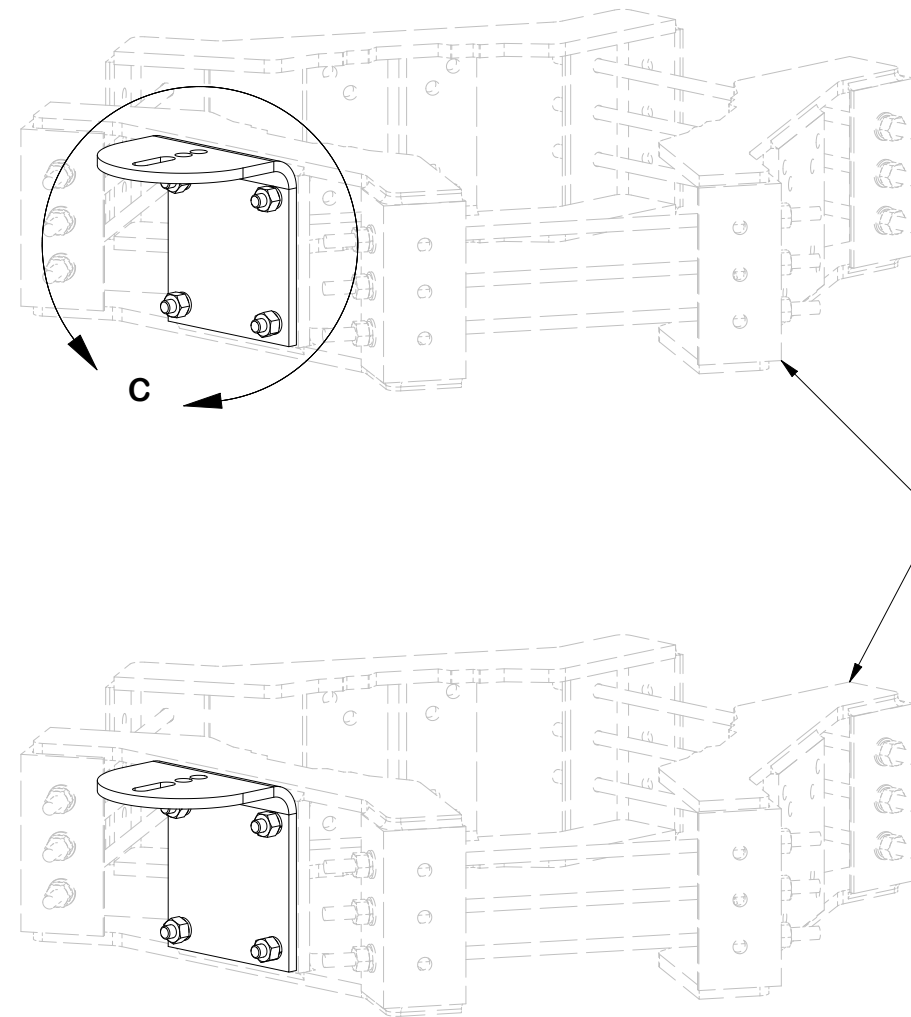
CPD NO. SP1	DRAWN BY SDR 8/13/2025	ENG. APPROVAL 8/14/2025
CLASS 87	SUB 02	DRAWING USAGE CUSTOMER
CHECKED BY JET 8/14/2025		

SITE PRO 1
 A valmont COMPANY

Engineering Support Team:
 sp1engineering@valmont.com

PART NO. UQB4-HDWE	PAGE 6 OF 7
DWG. NO. MDFCC-FLX4	

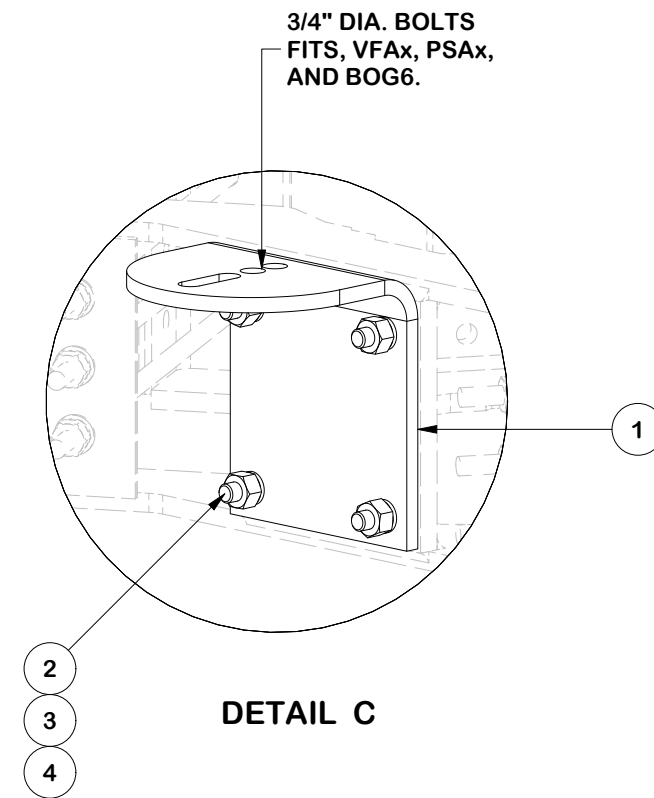
PARTS LIST						
ITEM	QTY	PART NO.	PART DESCRIPTION	LENGTH	UNIT WT.	NET WT.
1	2	X-RMBP	RING MOUNT BENT PLATE CONNECTION	15 1/2 in	17.02	34.04
2	8	A582112	5/8" x 2-1/2" HDG A325 HEX BOLT	2 1/2 in	0.33	2.67
3	8	G58LW	5/8" HDG LOCKWASHER		0.03	0.21
4	8	G58NUT	5/8" HDG HEAVY 2H HEX NUT		0.13	1.04
					TOTAL WT. #	37.96



RING MOUNTS
SOLD SEPARATELY

WORKS WITH
ANY RING MOUNT
WITH 5/8" BOLTS
ON A 6" X 6" BOLT
PATTERN

USE A5802 FOR UGLM
AND UGLM4 CONNECTION



3/4" DIA. BOLTS
FITS, VFAX, PSAX,
AND BOG6.

DETAIL C

TOLERANCE NOTES

TOLERANCES ON DIMENSIONS, UNLESS OTHERWISE NOTED ARE:
SAWED, SHEARED AND GAS CUT EDGES ($\pm 0.030"$)
DRILLED AND GAS CUT HOLES ($\pm 0.030"$) - NO CONING OF HOLES
LASER CUT EDGES AND HOLES ($\pm 0.010"$) - NO CONING OF HOLES
BENDS AND ANGLES ARE $\pm 1/2$ DEGREE
ALL OTHER MACHINING ($\pm 0.030"$)
ALL OTHER ASSEMBLY ($\pm 0.060"$)

PROPRIETARY NOTE:
THE DATA AND TECHNIQUES CONTAINED IN THIS DRAWING ARE PROPRIETARY INFORMATION OF VALMONT INDUSTRIES AND CONSIDERED A TRADE SECRET. ANY USE OR DISCLOSURE WITHOUT THE CONSENT OF VALMONT INDUSTRIES IS STRICTLY PROHIBITED.

DESCRIPTION
**MONOPOLE DIRECT FRAME CONNECT KIT
4 SECTOR FLEX COLLAR**

SITE PRO 1
Engineering Support Team:
sp1engineering@valmont.com
A valmont COMPANY

REV	DESCRIPTION OF REVISIONS	CPD	BY	DATE
B	ADDED NOTE TO PAGE 1	SP1	ADB	3/26/2025
A	CHANGED KIT	NCS	NSP	11/12/2024

PATENT INFORMATION: WWW.SITEPRO1.COM/PATENTS

CPD NO. SP1	DRAWN BY SDR 8/13/2025	ENG. APPROVAL 8/14/2025
CLASS 87	SUB 02	DRAWING USAGE CUSTOMER
CHECKED BY JET 8/14/2025		

PART NO. RMBP
DWG. NO. MDFCC-FLX4